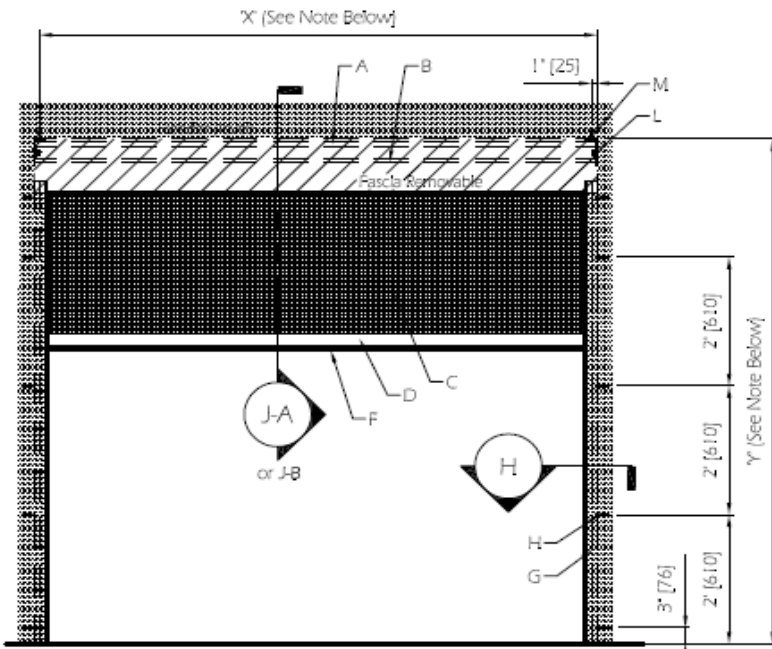


941-504-4355

3/8

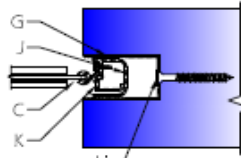


www.three8thsandco.com



FRONT VIEW

1/2" = 1'-0"



DETAIL H

3" = 1'-0"

RECESSED ROLLER

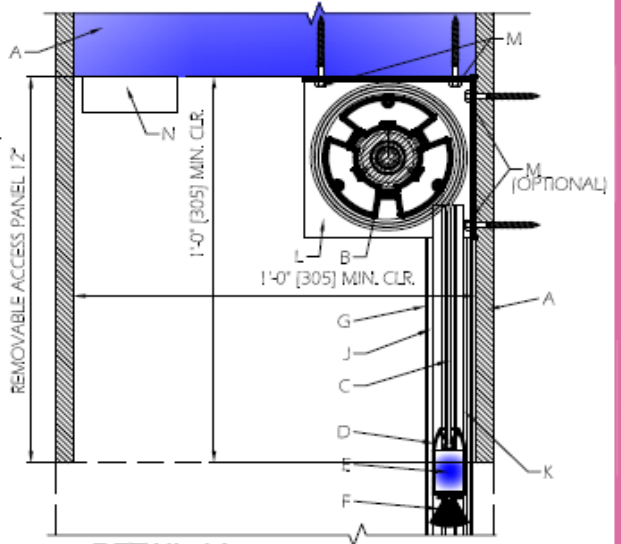
RECESSED TRACKS (NO HOOD)

J-A (X) = 35" MIN. TO 240" MAX.

(Y) = 36" MIN. TO 144" MAX.

J-B (X) = 240 1/4" MIN. TO 300" MAX.

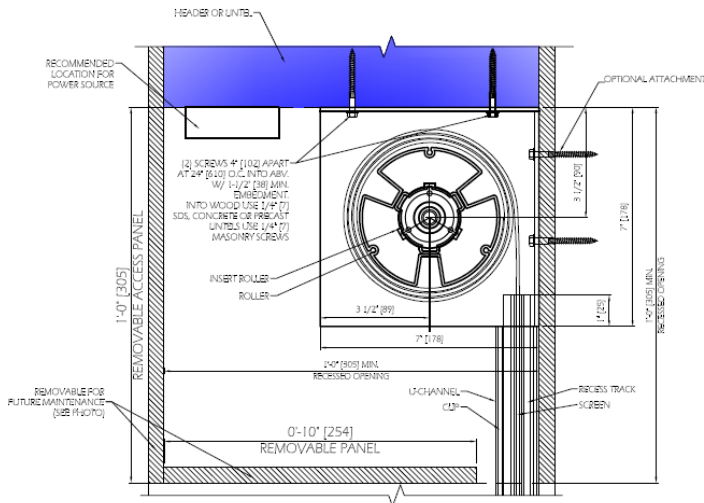
(Y) = 144 1/2" MIN. TO 192" MAX.



DETAIL J-A

3" = 1'-0"

- | | |
|---|--|
| A. HEADER & FASCIA (BY OTHERS) REMOVABLE ACCESS PANEL REQUIRED ON EITHER FRONT OR BOTTOM POCKET. COMPLETE WIDTH OF UNIT | K. INSERT TRACK |
| B. ROLLER ASSEMBLY | L. ROLLER MOUNTING ANGLE |
| C. SCREEN | M. ATTACHMENT SCREWS FASTEN UP INTO HEADER OR BACK INTO POCKET |
| D. WEIGHT BAR | N. RECOMMENDED LOCATION FOR POWER SOURCE |
| E. STEEL BAR INSERT WEIGHT | |
| F. FELT STRIP | |
| G. U-CHANNEL | |
| H. CHANNEL ATTACHMENT SCREWS | |
| J. CLIP | |



DETAIL J-B

7" RECESSED ROLLER MOUNT
(FINISHED HEIGHT 144 1/2"-192")
(FINISHED WIDTH 240 1/4"-300")

NOTES: Detail J-B (left) maximum width is now 384".

Cavity height is variable, based on space limitations.

Channels must be on the same plane as brackets.

MUST have removable access panel on bottom or front.

Nothing may impede on required pocket space.

Electrical should be run to the pocket during framing.